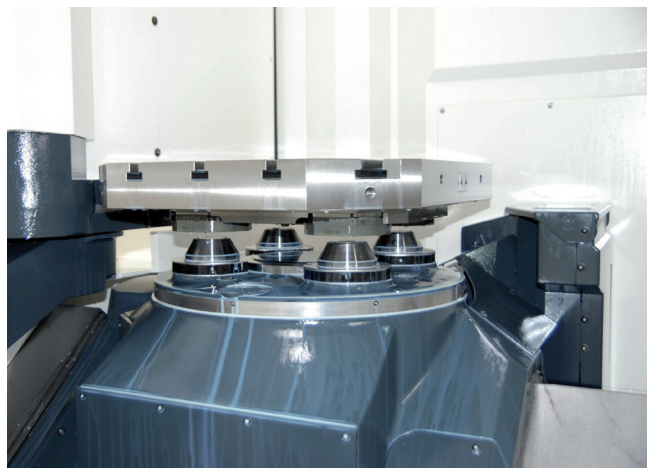
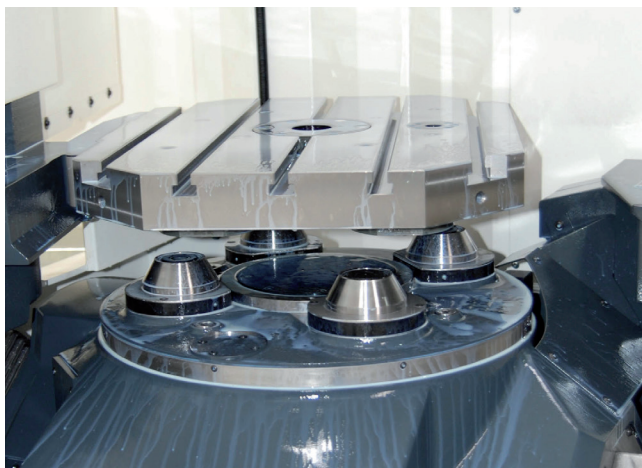




CLAMPING HEADS IN USE



RÖHM clamping heads are especially suited for applications with pallet clamping, which require very high change precisions, such as machining centers and transfer lines.



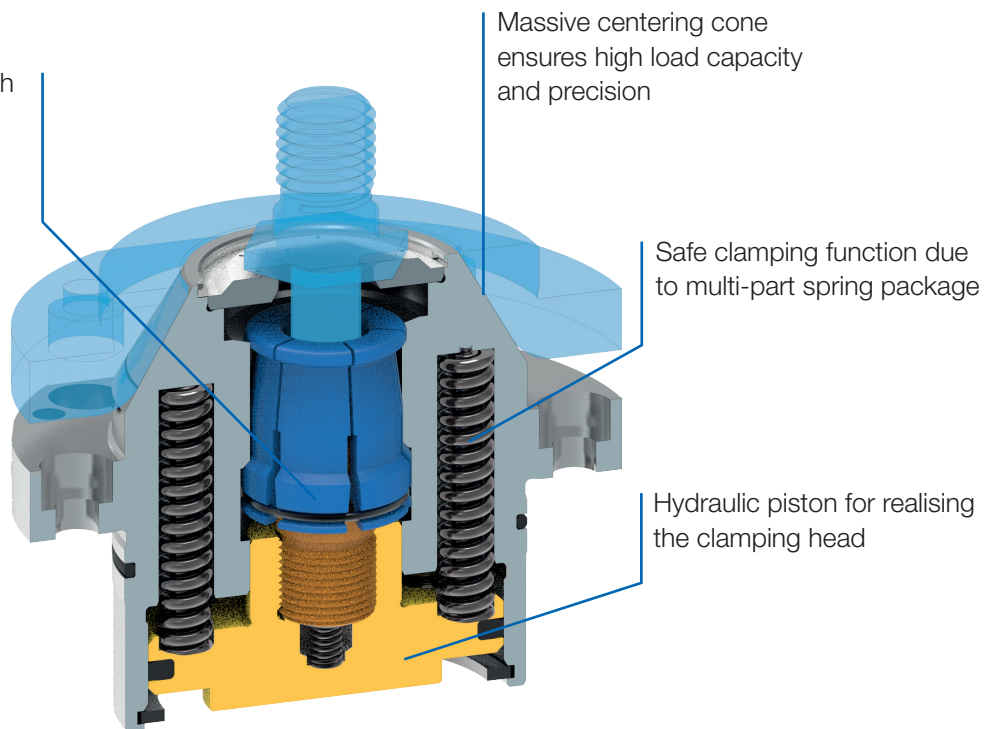
CLAMPING HEADS SPK

RÖHM clamping heads can be used for all existing pallet clamps. They are particularly suitable for applications which require very high change precisions, such as machining centers or transfer lines. Integrated in the machine table, the clamping heads clamp workpiece pallets in a minimum amount of space with high precision in the axial run-out and positioning for maximum efficiency.

ADVANTAGES AT A GLANCE

- ⊕ High change precision due to exact positioning of the pallet on the clamping tapers
- ⊕ Force amplification of the collet chucks results in high clamping forces and high system rigidity
- ⊕ Clamping force applied over long time period due to integrated spring package

Segment collet chuck with amplified force effect for high clamping forces and rigidity





Clamping heads SPK

Spring operated clamping head



APPLICATION

On machine tables, when secure clamping of the pallet must be guaranteed, even without hydraulic pressure applied.

TYPE

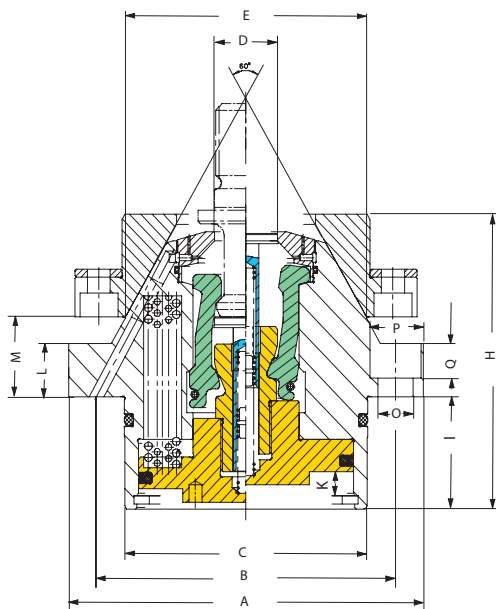
Spring-actuated clamping - hydraulic release.

CUSTOMER BENEFITS

- ⊕ High system rigidity due to stable design due to the connecting ribs between the individual spring packages
- ⊕ Hydraulic pressure is only required for release
- ⊕ Pull-out safety device without additional elements
- ⊕ Spring-actuated locking cover

TECHNICAL FEATURES

- Compact design
- More powerful effect of the collet chuck
- Air sensing possible



C 15

Spring operated clamping head for clamping pallets, hydraulic release

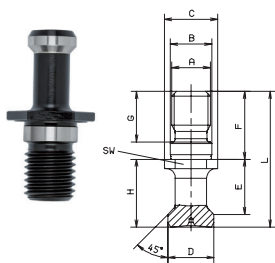
| Size A | 100 | 110 | 125 | 140 |
|--|-------|-------|-------|-------|
| Contents of delivery | set | set | set | set |
| B | 86 | 92 | 105 | 118 |
| C | 70 | 76 | 85 | 96 |
| D | 19 | 19 | 20 | 25 |
| E | 70 | 75 | 85 | 95 |
| H | 90 | 96 | 93 | 104 |
| I | 43 | 49 | 43 | 42 |
| K | - | 9,5 | 9,5 | 9,5 |
| L | 11 | 15 | 15 | 20 |
| M | 22 | 23 | 25 | 30 |
| O | 6,6 | 9 | 9 | 14 |
| P | 14 | 15 | 15 | 20 |
| Q mm | 7 | 8,5 | 8,5 | 13 |
| Piston area: releasing cm ² | 28,3 | 33,18 | 44,1 | 56,7 |
| Min. release pressure bar | - | 50 | 40 | 40 |
| Pull-in-force N | 15000 | 20000 | 20000 | 40000 |
| Blast-air pressure bar | 10 | 10 | 10 | 10 |
| Weight kg | 2,5 | 3 | 4 | 6 |

Sets can be aligned in height on request

Accessories spring operated clamping head

A 34

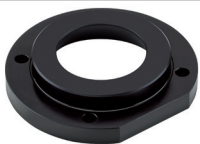
Draw-in bolts for clamping heads



| Item No. | For clamping head size | Size A | Contents of delivery | B | C | D | E | F | G | H | L | Key-width SW |
|----------|------------------------|---------|----------------------|----|------|------|------|----|----|------|----|--------------|
| 1243664 | 100 | M18x1,5 | piece | 19 | 25,4 | 15,5 | 23,7 | 21 | 19 | 28,2 | 49 | 22 |
| 1243665 | 110 | M18x1,5 | piece | 19 | 25,4 | 19 | 25,1 | 23 | 20 | 30,3 | 53 | 22 |
| 850094 | 125 | M20 | piece | 21 | 34 | 19 | 29 | 30 | 23 | 35 | 65 | 30 |
| 1116394 | 140 | M24 | piece | 25 | 38 | 23 | 34,7 | 40 | 32 | 40 | 80 | 30 |

C 15

Mounting flange for clamping heads



| Item No. | For clamping head size | Size A | Contents of delivery | B | C | C | E | H | I | M | O | P | Q mm | X |
|----------|------------------------|--------|----------------------|-----|----|-------|----|------|------|-------|-----|----|------|------|
| 1176444 | 100 | 105 | Satz | 90 | 80 | 6x60° | 64 | 20 | 9 | 27,2 | 6,6 | 11 | 6,8 | 33 |
| 1176382 | 110 | 110 | Satz | 96 | 85 | 6x60° | 68 | 20 | 7,5 | 29,06 | 6,6 | 11 | 6,8 | 35,5 |
| 1296089 | 125 | 125 | Satz | 106 | 88 | 4x90° | 85 | 32,5 | 18,5 | 25 | 9 | 15 | 9 | 39 |
| 1296090 | 140 | 135 | Satz | 116 | 98 | - | 95 | 38,5 | 23,5 | 30 | 9 | 15 | 9 | 45 |

Further details on request



Clamping heads SPK

Hydraulic clamping head



APPLICATION

On machine tables with constant hydraulic pressure applied.

TYPE

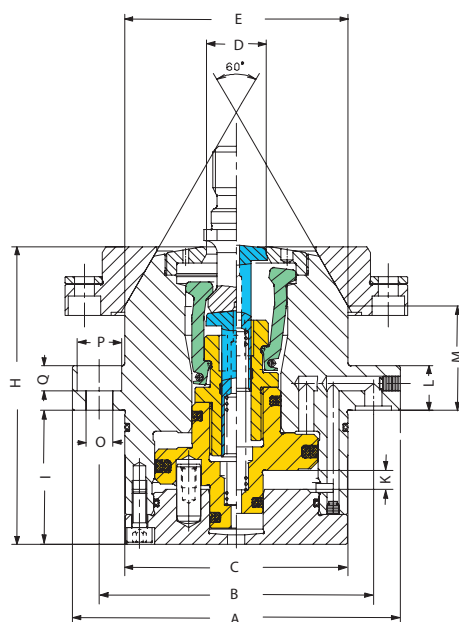
Clamping and release are hydraulic.

CUSTOMER BENEFITS

- ⊕ High system rigidity due to stable design due to the connecting ribs between the individual spring packages
- ⊕ Simple, reliable design
- ⊕ Spring-actuated locking cover

TECHNICAL FEATURES

- Compact design
- More powerful effect of the collet chuck
- Air sensing possible



C 15

Hydraulic clamping head for clamping pallets

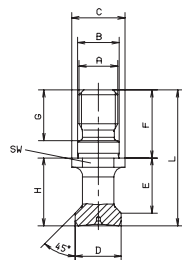
| Size A | 110 | 125 | 140 | 148 |
|--|-------|-------|-------|-------|
| Contents of delivery | piece | piece | piece | piece |
| B | 92 | 105 | 118 | 125 |
| C | 75 | 85 | 96 | 106 |
| D | 20 | 20 | 29,5 | 29,5 |
| E | 75 | 85 | 98 | 100 |
| H | 100 | 106,5 | 121,5 | 131 |
| I | 45 | 55 | 58 | 63 |
| K | 6,3 | 6,3 | 6,8 | 6,5 |
| L | 15 | 15 | 20 | 22 |
| M | 35 | 25 | 30 | 39,9 |
| O | 9 | 9 | 11 | 11 |
| P | 15 | 15 | 18 | 18 |
| Q mm | 8,5 | 8,5 | 11 | 11 |
| Piston area: clamping cm ² | 16,7 | 24 | 37 | 28,9 |
| Piston area: releasing cm ² | 23,7 | 31,2 | 44,2 | 33,3 |
| Max. operating pressure bar | 130 | 85 | 80 | 130 |
| Pull-in-force N | 21700 | 20400 | 29600 | 37500 |
| Blast-air pressure bar | 10 | 10 | 10 | 10 |
| Weight kg | 4 | 6 | 8 | 9 |

Sets can be aligned in height on request

Accessories hydraulic clamping head

A 34

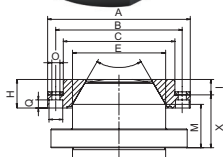
Draw-in bolts for clamping heads



| Item No. | For clamping head size | Size A | Contents of delivery | B | C | D | E | F | G | H | L | Key-width SW |
|----------|------------------------|--------|----------------------|----|------|-------|-------|----|------|----|----|--------------|
| 586393 | 110 | M16 | piece | 17 | 21,9 | 18,95 | 22,75 | 28 | 21 | 28 | 56 | 19 |
| 850094 | 125 | M20 | piece | 21 | 34 | 19 | 29 | 30 | 23 | 35 | 65 | 30 |
| 869859 | 140 | M24 | piece | 25 | 41,5 | 27,5 | 34 | 40 | 33,5 | 40 | 80 | 36 |
| 586394 | 148 | M24 | piece | 25 | 41,5 | 27,5 | 34 | 40 | 33,5 | 40 | 80 | 36 |

C 15

Mounting flange for clamping heads



| Item No. | For clamping head size | Size A | Contents of delivery | B | Parti-onw | C | E | H | I | M | O | P | Q mm | X |
|-----------|------------------------|--------|----------------------|-----|-----------|-----|-----|-------|------|------|-----|----|------|------|
| 1128288 ▲ | 110 | 115 | piece | 102 | 90 | 75 | 23 | 4x90° | 12,5 | 35 | 6,6 | 11 | 6,3 | 42,5 |
| 497213 ▲ | 125 | 125 | piece | 106 | 4x90° | 88 | 85 | 32,5 | 18,5 | 25 | 9 | 15 | 9 | 39 |
| 497214 ▲ | 140 | 135 | piece | 116 | 6x60° | 98 | 98 | 38,5 | 23,5 | 30 | 9 | 15 | 9 | 45 |
| 489557 ▲ | 148 | 160 | piece | 140 | 6x60° | 120 | 100 | 38 | 23,5 | 39,9 | 9 | 15 | 9 | 50,5 |

Further details on request

▲ on request